



**EURO**  
TILE & STONE

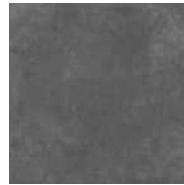
*B-Stone*



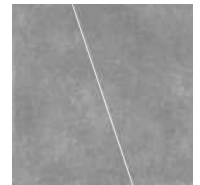
CENIZA  
35" x 35"



GRIS  
35" x 35"



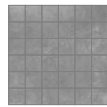
GRAFITO  
35" x 35"



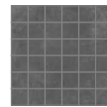
GRIS INC  
35" x 35"



CENIZA MOSAIC  
12" x 12"



GRIS MOSAIC  
12" x 12"



GRAFITO MOSAIC  
12" x 12"



CENIZA FACES WALL  
16" x 47"



CENIZA WALL  
16" x 47"



GRIS WALL  
16" x 47"



GRAFITO WALL  
16" x 47"

PACKAGING INFO

35x35	
U/M	SF
UM / Box	17.43
UM / Pc	8.72
SF / Pallet	348.6
Boxes / Pallet	20

2x2 MOSAIC	
U/M	SF
UM / Box	6
UM / Pc	1
SF / Pallet	360
Boxes / Pallet	60

16x47	
U/M	SF
UM / Box	10.22
UM / Pc	5.11
SF / Pallet	245.28
Boxes / Pallet	24

TECHNICAL INFO

	Material	35x35: Porcelain 16x47: Ceramic
	Floor / Wall	35x35: Both 16x47: Wall
	Shade Variance	V3
	Abrasion Resistance	35x35: < 175mm <sup>3</sup> 16x47: N/A
	Slip Resistance	35x35: Class 1 16x47: N/A
	Stain Resistance	Resistant
	Chemical Resistance	Resistant
	Frost Resistance	35x35: Resistant 16x47: Not Resistant
	Water Absorption	35x35: ≤ 0.5 % 16x47: > 10%
	Breaking Strength	35x35: 1300N 16x47: 900N
	Thickness	35x35: 10.4mm 16x47: 12.5mm
	Rectified Tile	Yes