



Commercial Order Desk:

P 613 244 3773

F 613 244 8553

E order@eurotilestone.com

General Inquiries:

P 613 244 4315

F 613 244 4320

E info@eurotilestone.com

3103 Hawthorne Rd | Ottawa, Ontario K1G 3V8

Connect with us on:



<http://eurotilestone.com/>



8.1 Schluter®-KERDI Waterproofing membrane

| Item No. | Width | Length | Area | Thickness |
|---------------|-------------|---------------|---|-----------|
| KERDI 200/5M | 3' 3" – 1 m | 16' 5" – 5 m | 54 ft ² – 5 m ² | 8 mil |
| KERDI 200/7M | 3' 3" – 1 m | 23' – 7 m | 75 ft ² – 7 m ² | 8 mil |
| KERDI 200/10M | 3' 3" – 1 m | 33' – 10 m | 108 ft ² – 10 m ² | 8 mil |
| KERDI 200/20M | 3' 3" – 1 m | 65' 7" – 20 m | 215 ft ² – 20 m ² | 8 mil |
| KERDI 200 | 3' 3" – 1 m | 98' 5" – 30 m | 323 ft ² – 30 m ² | 8 mil |
| KERDI 200200 | 6' 7" – 2 m | 98' 5" – 30 m | 646 ft ² – 60 m ² | 8 mil |

8.1 Schluter®-KERDI-DS Waterproofing membrane

| Item No. | Width | Length | Area | Thickness |
|----------|-------------|---------------|---|-----------|
| KERDI-DS | 3' 3" – 1 m | 98' 5" – 30 m | 323 ft ² – 30 m ² | 20 mil |



8.1 Schluter®-KERDI-BAND Waterproofing strip

| Item No. | Width | Length | Thickness |
|------------------------------|------------------|-----------------|-----------|
| 5" (125 mm) width | | | |
| KEBA 100/125/5M | 5" – 12.5 cm | 16' 5" – 5 m | 4 mil |
| KEBA 100/125/10M | 5" – 12.5 cm | 33' – 10 m | 4 mil |
| KEBA 100/125 | 5" – 12.5 cm | 98' 5" – 30 m | 4 mil |
| KEBA 100/125/300 | 5" – 12.5 cm | 984' 3" – 300 m | 4 mil |
| 7-1/4" (185 mm) width | | | |
| KEBA 100/185/5M | 7-1/4" – 18.5 cm | 16' 5" – 5 m | 4 mil |
| KEBA 100/185 | 7-1/4" – 18.5 cm | 98' 5" – 30 m | 4 mil |
| 10" (250 mm) width | | | |
| KEBA 100/250/5M | 10" – 25 cm | 16' 5" – 5 m | 4 mil |
| KEBA 100/250 | 10" – 25 cm | 98' 5" – 30 m | 4 mil |



8.1 Schluter®-KERDI-FLEX Waterproofing strip for use above movement joints

| Item No. | Width | Length | Thickness |
|-------------|--------------|---------------|-----------|
| FLEX 125/5M | 5" – 12.5 cm | 16' 5" – 5 m | 12 mil |
| FLEX 250/5M | 10" – 25 cm | 16' 5" – 5 m | 12 mil |
| FLEX 125/30 | 5" – 12.5 cm | 98' 5" – 30 m | 12 mil |
| FLEX 250/30 | 10" – 25 cm | 98' 5" – 30 m | 12 mil |



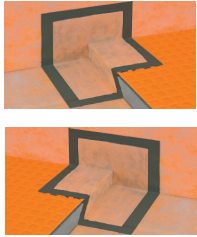
8.1 Schluter®-KERDI-KERECK-F Preformed corner

| Item No. | Thickness | Packaging |
|----------------|-----------|--------------------|
| KERECK / FI 2 | 4 mil | 2 inside corners |
| KERECK / FI 10 | 4 mil | 10 inside corners |
| KERECK / FA 2 | 4 mil | 2 outside corners |
| KERECK / FA 10 | 4 mil | 10 outside corners |

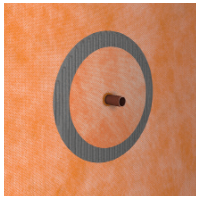


8.1 Schluter®-KERDI-KERS-B Preformed corner

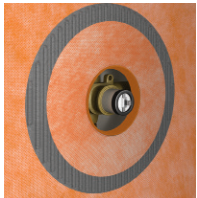
| Item No. | Thickness | Description | Packaging |
|---------------|-----------|-----------------------------|--|
| KERECK135FI2 | 4 mil | Inside corner, 135° | 2 units |
| KERECK135FI10 | 4 mil | Inside corner, 135° | 10 units |
| KERSB135KLR | 4 mil | Bench corners | 1 right and 1 left |
| KERSB135K5LR | 4 mil | Bench corners | 5 right and 5 left |
| KERSB135K | 4 mil | Bench/ neo-angle corner kit | 1 right and 1 left bench corner, and 2 135° inside corners |



| 8.1 Schluter®-KERDI-KERS | | | Preformed corner |
|--------------------------|-----------|-----------------------------|------------------|
| Item No. | Thickness | Packaging | |
| KERS 20 L | 4 mil | Left inside corner - 20 mm | |
| KERS 28 L | 4 mil | Left inside corner - 28 mm | |
| KERS 20 R | 4 mil | Right inside corner - 20 mm | |
| KERS 28 R | 4 mil | Right inside corner - 28 mm | |



| 8.1 Schluter®-KERDI-SEAL-PS | | | Pipe seal with over-moulded rubber gasket |
|-----------------------------|---------------------------|-----------|---|
| Item No. | Pipe nipple opening diam. | Thickness | Packaging |
| KMS 185/12 | 1/2" - 12.5 mm | 4 mil | 1 unit |
| KMS 185/20 | 3/4" - 20 mm | 4 mil | 1 unit |
| KMS 10185/12 | 1/2" - 12.5 mm | 4 mil | 10 units |
| KMS 10185/20 | 3/4" - 20 mm | 4 mil | 10 units |



| 8.1 Schluter®-KERDI-SEAL-MV | | | Mixing valve seal with over-moulded rubber gasket |
|-----------------------------|----------------------------|-----------|---|
| Item No. | Mixing valve opening diam. | Thickness | Packaging |
| KMSMV 235/114 | 4-1/2" - 114 mm | 4 mil | 1 unit |
| KMSMV 10235/114 | 4-1/2" - 114 mm | 4 mil | 10 units |





| Schluter®-KERDI-TROWEL | | | Trowel |
|------------------------|------------------------|-----------|--------|
| Item No. | Notch size | Packaging | |
| TRL-KER | 1/8" x 1/8" - 3 x 3 mm | 1 unit | |
| TRL-KER6 | 1/8" x 1/8" - 3 x 3 mm | 6 units | |



| Schluter®-KERDI-FIX | | Adhesive/sealant |
|---|------------------|------------------|
| Item No. | Cartridge Volume | |
| KERDIFIX + <i>color</i> * | 9.81 oz - 290 ml | |
| KERDIFIX 100 G (available in grey only) | 3.38 oz - 100 ml | |

***Color Codes**

 **BW**
Bright white
  **G**
Grey

To complete the item number, add the *color* code (e.g., KERDIFIX / *BW*).