



---

**Commercial Order Desk:**

P 613 244 3773

F 613 244 8553

E [order@eurotilestone.com](mailto:order@eurotilestone.com)

**General Inquiries:**

P 613 244 4315

F 613 244 4320

E [info@eurotilestone.com](mailto:info@eurotilestone.com)

---

3103 Hawthorne Rd | Ottawa, Ontario K1G 3V8

Connect with us on:



<http://eurotilestone.com/>



# PRO NANO SEAL™

## 2. MANUFACTURER

### PROMA Adhesives Inc.

9801, Parkway, Anjou, Quebec Canada H1J 1P3

Tel.: 514.852.8585

Fax: 514.852.8225

Toll-free: 1 866.51.PROMA (77662)

Email: info@proma.ca

Web: www.proma.ca

## 3. PRODUCT DESCRIPTION

PRO NANO SEAL is an organic solvent-based impregnating sealer designed to give a wet look and protect natural stones.

### Features

- ◆ Strong color enhancement
- ◆ Wet look
- ◆ No superficial film when dry
- ◆ 0VOC solvent
- ◆ Full strength protection is achieved only after 3-5 day curing time
- ◆ Use on all types of finishes, but is best on polished and honed surfaces
- ◆ Use to seal sanded and un-sanded cementitious grout joints
- ◆ Use for floors, walls and backsplashes
- ◆ Good protection against household dirt and stains
- ◆ Good water repellency
- ◆ Good oil and grease resistance
- ◆ Faint odor
- ◆ For interior and exterior institutional, commercial and residential applications

### Packaging

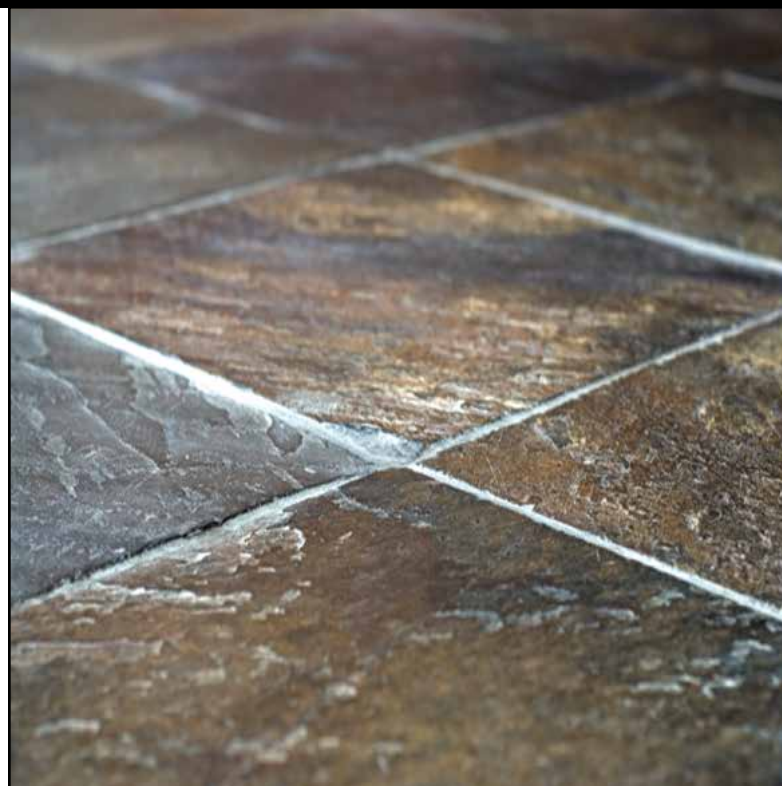
500 mL (16.9 oz) bottle; 946 mL (32 oz) bottle; 4 L (1.05 US gal) bottle; 20 L (5.3 US gal) pail

### Recommended Surfaces

- ◆ Granite
- ◆ Slate
- ◆ Marble and calcareous stones
- ◆ Quartz (honed and textured finished)
- ◆ Brick
- ◆ Concrete
- ◆ Cement grout joints
- ◆ Floors, walls, counters and backsplashes

### Limitations

- ◆ Do not use at temperatures below 15°C (60°F) or above 30°C (86°F).
- ◆ Do not use on plaster joints, wood parquet or vinyl flooring.
- ◆ Do not use on ceramic or porcelain tiles.
- ◆ Full strength protection is achieved only after 3-5 days curing time.
- ◆ Do not apply in the presence of pre-mixed acrylic or urethane grout joints.



## 4. TECHNICAL DATA

### Applicable Standards

For Additional Information, please refer to the most recent TCNA handbook for ceramic tile installation or the TTMAC Specification Guide 09 30 00 Tile Installation Manual, or visit our website at [www.proma.ca](http://www.proma.ca).

WORKING PROPERTIES (@23° C [73° F] and 50% RH)	
Full strength protection	3-5 days
Expected wear (normal conditions)	1-3 years
Remover	PRO DECAP™, PRO DECAP-U™
Maintenance	PRO CLEAN™, PRO STONE & QUARTZ CLEANER™





PHYSICAL PROPERTIES (@23° C [73° F] and 50% RH)	
VOC content	< 115 g/L
Color	Clear
Color enhancement	Strong
Odor	Faint odor
<b>Approximate coverage (2 coats) *</b>	
500 mL (16.9 oz)	5.2 m <sup>2</sup> (56 ft <sup>2</sup> )
946 mL (1 US qt)	10 m <sup>2</sup> (108 ft <sup>2</sup> )
4 L (1.05 US gal)	40 m <sup>2</sup> (430 ft <sup>2</sup> )
20 L (5.3 US gal)	200 m <sup>2</sup> (2,150 ft <sup>2</sup> )
<b>Shelf life</b>	
24 months if kept in its original unopened packaging and stored in a dry location. Protect from freezing.	
<i>*Varies depending on porosity and texture of surface, temperature, humidity and method of application.</i>	

## 5. INSTALLATION

### Prevention Measures

#### PERSONAL SAFETY

- ♦ Wearing of gloves, safety glasses and appropriate clothing to prevent skin contact when using the product is always recommended.
- ♦ Please follow safety guidelines outlined in the "CAUTION" section indicated on the bottle (see hereunder).

#### NEIGHBORING AREA PROTECTION

- ♦ Always protect the neighboring working area against unexpected contact with the product to avoid irreversible damage or alterations that could only be restored by its replacement.

#### PREREQUISITE CONDITIONS

- ♦ Surface temperature should be between 15 and 30°C (60 and 86°F).
- ♦ Do not confuse surface temperature with room temperature.
- ♦ In some cases there can be an important gap between the temperature you can feel on a surface and the ambient temperature. For example, a surface directly exposed to sun light through a window will most likely be much warmer than the ambient air. Also, a surface in a basement or at ground level without no basement or with an unheated basement will be colder than the ambient air. In both those cases, the drying time will be affected hence affecting the strength and resistance of the sealer which could also remain sticky.

#### Color enhancement ascertainment.

- ♦ It is important to validate that the color enhancement level you will get with the sealer will be up to your expectations and that no shades or specific colors will stand out afterwards.
- ♦ To assess the color enhancement you will get, wet the surface with water and look at the result. The color enhancement you will get from the sealer should be similar to what you see. The color enhancement you will get from the sealer could be lesser but undesired shades and colors should appear.

#### First time user, without preliminary testing.

- ♦ Never use the product for the first time on a large area without preliminary testing.
- ♦ Usage of the sealer with no prior experience could end-up with an undesired result (visible defects, unexpected level of color enhancement, undesired finish or inadequate protection of the treated surface) which could have been caused by the application method used, the incompatibility between the sealer and the materials on which it was applied or the sealer's characteristics. In those cases, stripping off the sealer on a large area could prove strenuous and could have been avoided with prior testing on a small area. Even more, the removing process could damage or alter irreversibly the covering material that could only be restored by its replacement.

#### Using the product on a new surface or on an unknown surface, without preliminary testing.

- ♦ Even if you have used the product in the past, because covering manufacturers do modify occasionally the composition of their products, there could be, without your knowledge, presence of an incompatible substance that could be irreversibly damaged or altered or give unexpected end results that would only be restored by its replacement.

#### Never apply the sealer on a dirty or soiled surface.

- ♦ The application of the sealer on a dirty surface or on which there are remaining grout residues, will trap in the contaminants, leaving dirt apparent and make the maintenance very difficult.

#### Do not apply the sealer on a waxed surface without prior removal.

- ♦ Application of a coat of sealer on a waxed surface will not be appropriate. There won't be any penetration or adequate adherence, leaving the surface with apparent "fish eyes". Even more, the existing wax could become sticky. You will then have no other alternative but to strip off all coats of sealer and wax with the appropriate remover. Please note that often, flamed granite surfaces are treated with a stone wax.

#### Sealer application in the course of a renovation project or a new construction.

- ♦ During the course of a renovation or a new construction, a sealed surface can be in contact with all kinds of contaminants or materials that will damage it. Assessing that the curing time is fully respected and that the protection is adequate and efficient is mandatory.
- ♦ For example, badly adjusted or non-waterproof cardboards on the floor will not prevent the penetration of contaminants that will ultimately damage the sealer during the course of the project.
- ♦ More so, absence of adequate protection and/or insufficient curing time and/or installation mal practices will damage the sealer that will only be corrected by its removal and the application of new coats of sealer.
- ♦ The absence of air circulation caused by more or less waterproof cardboards or plastic sheets with a high level of humidity coming from under the surface and a cool surface temperature will also affect the sealer's integrity and make it sticky or allow grout residues and other contaminants to migrate into the sealer during the course of the project.
- ♦ Sealer removal and application of new coats of sealer will be necessary to correct the situation.
- ♦ Therefore, evaluation of the current situation should be done before hand to assess the relevancy of the protective measures and the capacity to apply them correctly. All this to avoid restoration work that can prove strenuous compared to leaving the surface unsealed during the course of the renovation or construction and needing to deep clean and seal at the end of the project.

### Methods of Application

**Note:** Test on a small area to determine ease of application and desired results. Wear gloves and safety glasses when using this product, and protect neighboring areas against unexpected contact with product to avoid possible damage.

#### New Installations

- ♦ Apply 1 or 2 coats of sealer (wet on wet) before installation or grouting. Allow 2 to 3 days for sealer to cure before grouting.
- ♦ After the grout's curing time as per grout manufacturer's recommendation (between 7 and 28 days depending on the type of grout used) apply a final coat of sealer.
- ♦ Please note that if at that time there is presence of grout residues on the surface, they must be cleaned off before applying the sealer. Any negligence to do so will leave the surface looking grayish and dirty.

#### Surface Recoating

- ♦ Only on surfaces sealed with PRO NANO SEAL. First deep clean surface with PRO DECAP. Application of 1 coat of sealer is usually enough.

#### Existing Installation

- ♦ PRO NANO SEALER cannot be applied on a surface previously sealed with a silicone-type sealer or a topical sealer. For surfaces previously sealed with an acrylic and/or urethane finish or sealer, use the appropriate remover. For existing water-based sealers or finishes, use PRO DECAP. For solvent-based sealers, use an appropriate remover for solvent-based acrylic sealers and finishes.



## APPLICATION PROCEDURE

1. Apply a thin coat of sealer evenly on the surface with a sponge brush or a white nylon scuff pad.
2. The surface should remain wet with sealer for 15 to 20 minutes.
3. Do not allow the sealer to dry during that time. Add more sealer or spread excess sealer on the surface if needed.
4. After that time, remove excess sealer on the surface and add another coat of sealer. (wet on wet).
5. Allow penetration for another 15 minutes, making sure surface remains wet at all times. Remove excess sealer and allow 30 minutes to dry.
6. After that time, make sure there is no accumulation of sealer, on the top edge of the tiles for vertical surfaces, to avoid apparition of streaks running down or in hollows on horizontal surfaces to avoid apparition of rings.
7. Finally wipe off any apparent sealer on polished surfaces such as metal and glass inserts with a soft dry cloth or a white paper towel to regain original shine.
8. Sealer will take 72 hours to gain full strength.

## Application Issues

### Appearance of greasy residue on the surface of tiles

#### Main causes

- ♦ This generally occurs when excess sealer during application was not wiped off or only partially wiped off after the 30-minute drying time delay required.
- ♦ Application in a cool and not well-ventilated area, which lengthens drying time.

#### Corrective measures

- ♦ Wipe surface with white paper towels until it is completely dry.
- ♦ Dry scrub surface with a white or green scuff pad.
- ♦ Clean the surface with PRO DECAP™ using a white scuff pad (see respective data sheet for details).

### Whitish appearance on the surface

#### Main causes

- ♦ This situation generally occurs when the excess sealer during the application was not wiped off or only partially after the requested drying times.

#### Corrective measures

- ♦ Wipe Scrub the surface with a white or black scuff pad.
- ♦ Clean the surface with PRO DECAP using a white scuff pad and seal the surface again if needed.

### Low color enhancement

#### Main causes

- ♦ This situation generally occurs when the porosity of the stone is important and the sealer migrates deeper in the stone, leaving a duller appearance.

#### Corrective measures

- ♦ Apply an additional coat of sealer.
- ♦ If after an additional coat of sealer the color enhancement is still under expectations, it is probably because we have reached the maximum color enhancement possible due to nature of the stone.
- ♦ It is therefore important to perform a test prior to the application of the sealer to determine if the color enhancement meets your expectations and if not, seek other alternatives.

### Undesired colors that stand out after the application of the sealer

#### Main causes

- ♦ This situation generally occurs when some color pigments and minerals present in the stone are almost non visible when the surface is unsealed. The colors will be enhanced and stand out on contact with the sealer.

## Corrective measures

- ♦ Sealer must be removed as soon as possible with PRO DECAP-U without dilution.
- ♦ Test with another sealer to assess suitability and results.
- ♦ It is of the outmost importance to perform a test prior to the application of the sealer on the whole surface. There is always a possibility, especially with natural stones, that some undesired colors or shades will pop up after the application of the sealer.

## Sealer Efficiency Validation

The sealer protection should be adequate for many months. To evaluate if additional coats of sealer are required, put a few drops of water on the surface and wait a few minutes. Afterwards, if the water drops still bead and the color under the drops is not enhanced, then you can conclude that the surface is well protected and doesn't need any additional coat of sealer. On the opposite, apply an additional coat of sealer as per recoating instructions. A more stringent maintenance care may be required for high traffic areas.

## Drying Time

Normal circulation or use generally after 24 hours. Final cure after 72 hours.

## Disposal

Do not dispose of excess sealer into sewers; instead send to an appropriate recycling center.

## Health and Safety

Refer to the Safety Data Sheet (SDS) for complete details.

## 6. AVAILABILITY AND COST

PROMA products are widely available in Canada and the Northeast United States. To find a distributor of PROMA products, call **toll-free: 1.866.51.PROMA (77662)**.

## 7. WARRANTY

PROMA warrants that this product is manufactured using quality raw materials and is of merchantable quality and suitable for the purpose for which it was intended. PROMA's liability under this warranty shall be limited to the replacement of its product proven to be defective. Neither seller nor manufacturer shall be liable for any injury, loss or damage, direct or consequential, arising from the use of/or the inability to use this product.

## 8. MAINTENANCE

PRO CLEAN or PRO GRANITE & QUARTZ CLEANER should be used for regular maintenance.

## 9. TECHNICAL SERVICE

For more detailed information on this product, please contact our technical department for proper recommendations and job field assistance. **Toll-free: 1.866.51.PROMA (77662)**.

## 10. FILING SYSTEM

Additional information is available upon request, or by visiting [www.proma.ca](http://www.proma.ca).





---

**PROMA Adhesives Inc.**

9801, Parkway, Anjou, Quebec Canada H1J 1P3

Tel: 514.852.8585

Fax: 514.852.8225

Toll-free: 1 866.51.PROMA (77662)

Email: [info@proma.ca](mailto:info@proma.ca)

© 2018 PROMA Adhesives, Inc.

